



4 Gladeside, Cambridge, CB4 1GA

Offers In The Region Of £278,000

- GROUND FLOOR APARTMENT
- ALLOCATED PARKING
- GREAT ACCESS TO A14 AND CAMBRIDGE NORTH STATION
- CLOSE TO SCIENCE PARK

4 Gladeside, Cambridge CB4 1GA

Nestled in the desirable area of Gladeside, Cambridge, this charming ground floor apartment offers a perfect blend of comfort and convenience. With a well-designed layout spanning 517 square feet, the property features one inviting reception room, two cosy bedrooms, and a modern bathroom, making it an ideal choice for a couple or a single occupant.

Built in 2009, this apartment boasts contemporary finishes and a welcoming atmosphere. The property is particularly appealing for first-time buyers or investors, as it presents a promising rental opportunity, with potential earnings of £1,450 per calendar month.

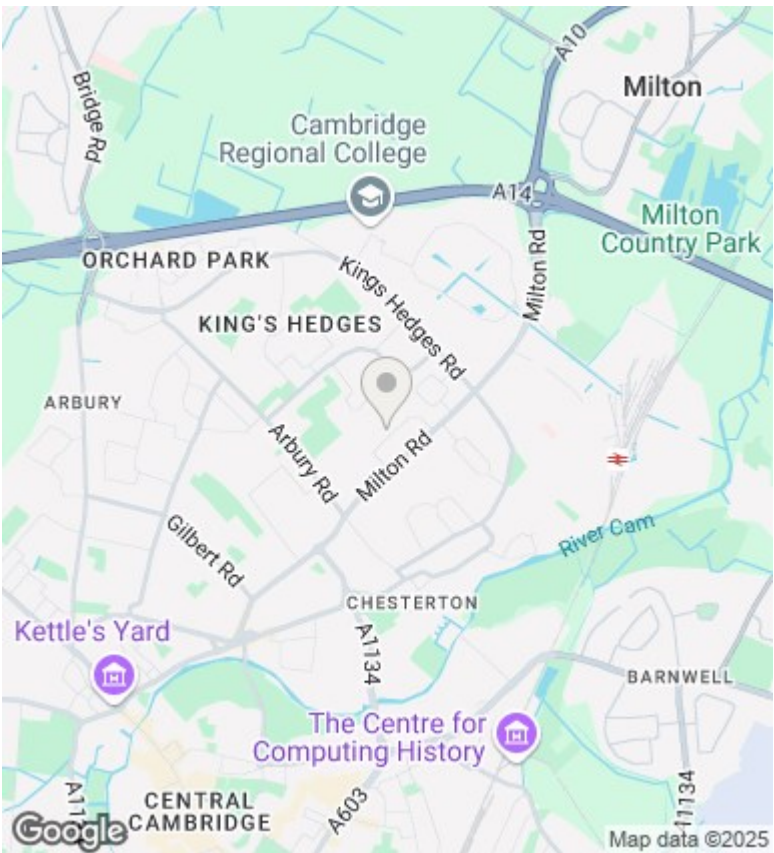
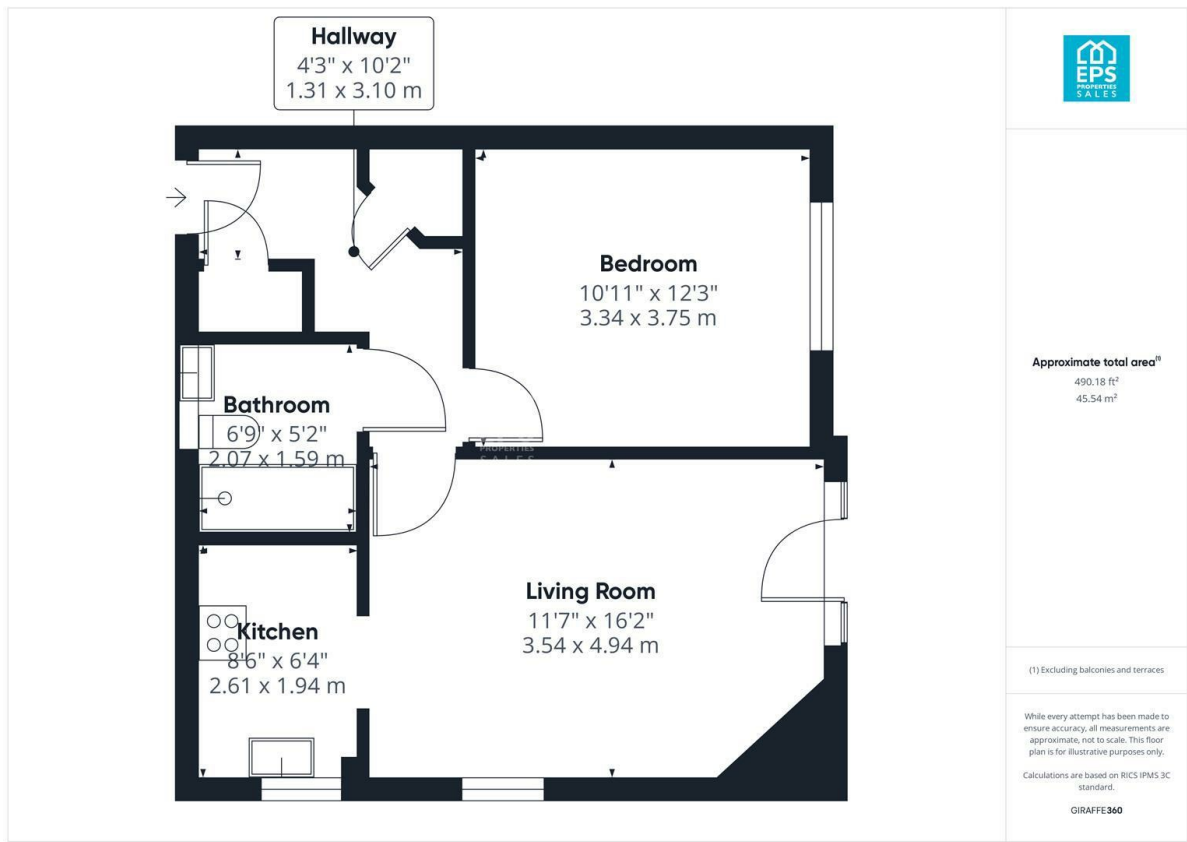
One of the standout features of this home is its prime location. Situated close to the renowned Science Park, the A14, and North Cambridge train station, residents will enjoy easy access to key transport links and local amenities. This makes commuting and exploring the vibrant city of Cambridge a breeze.

Additionally, the property includes a designated parking space, a valuable asset in this bustling area. Whether you are looking to settle down in a thriving community or seeking a sound investment, this apartment in Gladeside is a remarkable opportunity not to be missed.



Council Tax Band:





Directions

Viewings

Viewings by arrangement only. Call 01223414400 to make an appointment.

Council Tax Band

Energy Efficiency Rating		
	Current	Potential
Very energy efficient - lower running costs		
(92 plus) A		
(81-91) B	79	79
(69-80) C		
(55-68) D		
(39-54) E		
(21-38) F		
(1-20) G		
Not energy efficient - higher running costs		
England & Wales		
EU Directive 2002/91/EC		